

Diabetic Maculopathy

الاعتلال البقعي

World leading
experts in
eye care



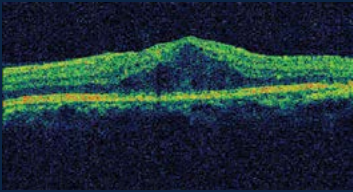
Moorfields
Eye Hospital Dubai
A branch of Moorfields London



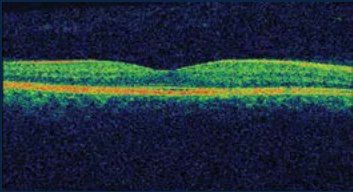
مستشفى كينجز كوليدج لندن
King's College Hospital London

Intravitreal Injection Treatment

The macula is the central part of the retina at the back of the eye. It is responsible for fine vision (reading, writing, watching television, and recognising faces). Patients with diabetes may develop macular oedema (swelling of the retina) due to leaking of fluid from blood vessels. This causes the vision to become blurred.



Macular oedema



Normal retina

For some patients a course of anti VEGF injections into the eye will be needed to treat the swelling and improve the vision. The drug stops the growth of the abnormal blood vessels and reduces the swelling of the retina.

A course of three injections is recommended each injection one month apart at the start. The procedure is carried out in a clean environment using sterile technique.

The eye is cleaned and local anaesthetic drops are given to numb the eye. During the injection you will feel a sensation of pressure but it should not be painful. It takes less than a minute to give the injection and the needle is slowly withdrawn when finished.

Afterwards the eye may feel slightly bruised and a bruise may appear on the white of the eye. This is not a serious problem and is due to blood vessels in the lining of the outside of the eye being caught by the needle.

This will slowly disappear over a couple of weeks. If your eye becomes very red and/or painful in the days and weeks following the injection you should contact the hospital.

The risks of the injection are bleeding and infection. The risk of this happening is one person in every 3,000.

Aftercare

- ▶ The eye may or may not be covered after the injection. If a pad is applied this may be removed when you reach home.
- ▶ You will be given a tube of Chloramphenicol ointment to be used three times a day for 5 days.
- ▶ We do not usually give post injection drops. If the eye is uncomfortable you may take 2 paracetamol or your regular pain relief tablet.
- ▶ Do not splash water into the eye for one day.
- ▶ You may perform all your usual activities from the following day.
- ▶ When ready for discharge you will be given an appointment for a follow up visit.



Moorfields Dubai



Moorfields Eye Hospital Dubai

A branch of Moorfields London

Moorfields Eye Hospital Dubai

Dubai Healthcare City,
PO Box 505054, District 1,
Al Razi Building 64, Block E, Floor 3,
Dubai, U.A.E.
Tel. +971 4 429 7888
moorfields.ae



Opening hours:

Saturday to Thursday, 8.30am to 5.30pm,
for information and advice on eye conditions and
treatments from experienced ophthalmic trained staff.



مستشفى كينغز كوليدج لندن
King's College Hospital London

King's College Hospital - Dubai Hills

Dubai Hills, AlKhail Road,
Marabea East Exit
Tel: +9714 247 7777
www.kch.ae
Open 24/7

