

Amblyopia Therapy

علاج الغمش

World leading
experts in
eye care



Moorfields
Eye Hospital Dubai
A branch of Moorfields London



مستشفى كينجز كوليدج لندن
King's College Hospital London

What is **Amblyopia**?

Amblyopia is also known as a 'lazy eye'. Amblyopia is an early childhood condition where a child's eyesight in one eye does not develop as it should. The problem is usually in just one eye, but can sometimes affect both of them.

When a patient has amblyopia the brain focuses on one eye more than the other, virtually ignoring the 'lazy eye'. If that eye is not stimulated properly the visual brain cells do not mature normally.

What causes a **'lazy eye'**?

Anything that interferes with clear vision in either eye during the critical period (birth to 6 years of age) can cause amblyopia. The most common causes of amblyopia are constant strabismus (constant turn of one eye), anisometropia (different vision/prescriptions in each eye), and/or obstruction of an eye due to cataract, trauma, lid droop, etc.



Why does my child **need to wear a patch?**

Occlusion (patching) is used to make a lazy eye work on its own and so improve the vision by encouraging the development of the nerve pathways from that eye to the brain.

The patch is worn over the good eye and the amount of time the patch must be worn is decided by the Orthoptist/Ophthalmologist and relates to the extent of the visual problem. If patching is implemented early on, a good level of vision can be achieved. When patching is started in an older child, it is more difficult to achieve good vision.

My Child's **Treatment**

Patient name: _____

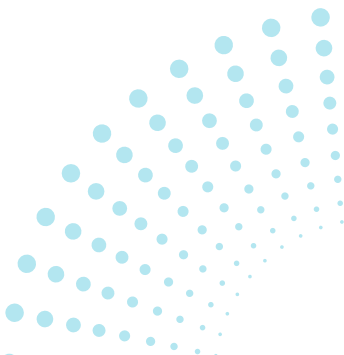
Patient number: _____

Glasses must be worn _____

Please patch the eye RIGHT LEFT

For _____ hours a day.

Please remember if your child has glasses it is important that the child has their glasses on while wearing his/her patch.



Moorfields Dubai



Moorfields Eye Hospital Dubai

A branch of Moorfields London

Moorfields Eye Hospital Dubai

Dubai Healthcare City,
PO Box 505054, District 1,
Al Razi Building 64, Block E, Floor 3,
Dubai, U.A.E.
Tel. +971 4 429 7888
moorfields.ae



Opening hours:

Saturday to Thursday, 8.30am to 5.30pm,
for information and advice on eye conditions and
treatments from experienced ophthalmic trained staff.



مستشفى كينغز كوليدج لندن
King's College Hospital London

King's College Hospital - Dubai Hills

Dubai Hills, AlKhail Road,
Marabea East Exit
Tel: +9714 247 7777
www.kch.ae
Open 24/7

