

Posterior Vitreous Detachment

إنفصال الجسم الزجاجي



World leading
experts in
eye care



Moorfields
Eye Hospital Dubai
A branch of Moorfields London



مستشفى كينغز كوليدج لندن
King's College Hospital London

Facts

The vitreous humour is a transparent gel substance filling the inside of the eyeball. The vitreous lies against the retina in the normal eye. It is transparent like glass, so light passes through it to reach the retina.



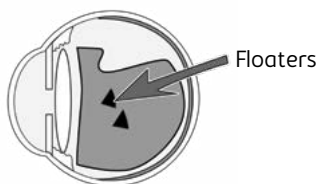
The retina lines the back of the eye like a tiny curved cinema screen, and collects visual images to send to the brain. With age, the vitreous gel shrinks and separates itself from part of the retina and dislodges forward, this is called a Posterior Vitreous Detachment (PVD). As the jelly detaches, it stimulates the retina and causes flashes to be seen.



PVD is a common degenerative change, which affects one or both eyes in many people after middle age. It may present earlier in shortsighted patients or those who have sustained traumas to the eyes.

Signs and **Symptoms**

Thickening of the jelly casts shadows on the retina and are seen as floating shapes. These black “floaters” in your vision move with the eye and then settle as the eye rests. These are often described by patients as a “cobweb” or “insects”.



You may also be aware of flashing lights, like little flickers in the outer periphery. Usually these do not highlight a problem, however, it is important to have the eye thoroughly checked, as occasionally a retinal tear or a retinal detachment may occur.

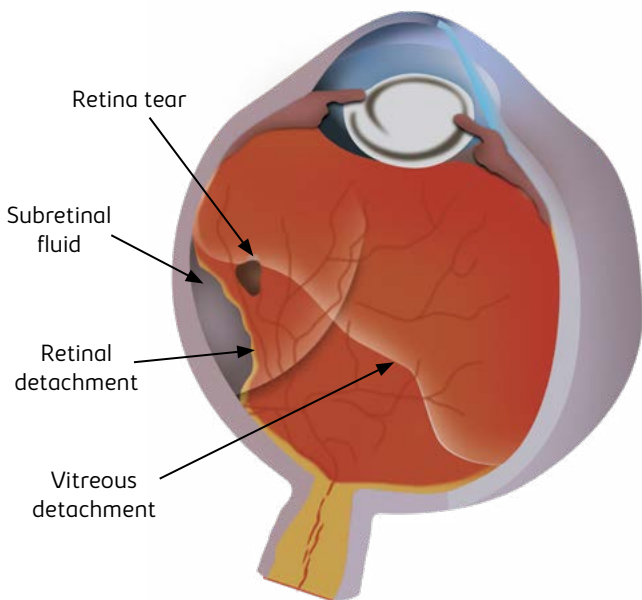
The Eye **Examination**

Your pupil will be dilated with drops. The drops take about 20 minutes to work, and your reading sight will be blurred for about two to three hours. The doctor will view the edge of the retina to look for a retinal tear. The examination may be carried out with several types of instrument. The doctor may also apply a special Contact Lens and might exert an indentation on the outer part of the eye.



Adverse Consequences

If a retinal tear occurs, laser treatment is needed as soon as possible. A retinal detachment requires a surgical procedure.



If you notice an increase in floaters, new floaters in your vision, or if you notice a portion of your visual field missing, like a curtain coming across, this may be a warning of a retinal detachment and you should see a specialist as soon as possible.



Treatment

There is no treatment required for posterior vitreous detachment. The floaters usually disappear after a few months, however, sometimes there will be a few residual floaters left behind. In time, you will start taking less notice of them and learn to ignore them.

How do I recognize a **retinal detachment**?

If you have a retinal detachment you may notice:

- ▶ Increased floaters
- ▶ Increased flashing lights
- ▶ Black persistent shadows at the edges of vision in one eye

If any of the above occur you are advised to seek medical advice.



Moorfields Dubai



Moorfields Eye Hospital Dubai

A branch of Moorfields London

Moorfields Eye Hospital Dubai

Dubai Healthcare City,
PO Box 505054, District 1,
Al Razi Building 64, Block E, Floor 3,
Dubai, U.A.E.
Tel. +971 4 429 7888
moorfields.ae



Opening hours:

Saturday to Thursday, 8.30am to 5.30pm,
for information and advice on eye conditions and
treatments from experienced ophthalmic trained staff.

.....



مستشفى كينغز كوليدج لندن
King's College Hospital London

King's College Hospital - Dubai Hills

Dubai Hills, AlKhail Road,
Marabea East Exit
Tel: +9714 247 7777
www.kch.ae
Open 24/7

